

Style glass

Complete Product
Mechanism + Cover Plate + Frame



**A Design
Where
Luxury
Meets
Technology**





INCREASED STRENGTH - HIGH SCRATCH RESISTANCE

With STYLE GLASS, luxury meets technology, with its square lines, it seamlessly integrates into any space with style. Glass is a material whose value needs not be proven: it's numerous qualities make it one of the truly indispensable materials for an elegant decoration. The purity of White, the elegance of Black and the attraction of Mirror complemented by the selected 10 charming cover plate colours.

COLOURS



White



Black



Mirror



One Way Switch	
10AX, 250 V	
Mechanism + Cover Plate	
Screwless Code	500-00XX 35-100
Screw Type Code	500-00XX 25-100
Frame Code	107-XX00 00-160



One Way Switch Illuminated	
10AX, 250 V	
Mechanism + Cover Plate	
Screwless Code	500-00XX 35-101
Screw Type Code	500-00XX 25-101
Frame Code	107-XX00 00-160



Double One Way Switch	
10AX, 250 V	
Mechanism + Cover Plate	
Screwless Code	500-00XX 35-102
Screw Type Code	500-00XX 25-102
Frame Code	107-XX00 00-160



Double One Way Switch Illuminated	
10AX, 250 V	
Mechanism + Cover Plate	
Screwless Code	500-00XX 35-103
Screw Type Code	500-00XX 25-103
Frame Code	107-XX00 00-160



Two Way Switch	
10AX, 250 V	
Mechanism + Cover Plate	
Screwless Code	500-00XX 35-109
Screw Type Code	500-00XX 25-109
Frame Code	107-XX00 00-160



Two Way Switch Illuminated	
10AX, 250 V	
Mechanism + Cover Plate	
Screwless Code	500-00XX 35-110
Screw Type Code	500-00XX 25-110
Frame Code	107-XX00 00-160



Double Two Way Switch	
10AX, 250 V	
Mechanism + Cover Plate	
Screwless Code	500-00XX 33-111
Screw Type Code	500-00XX 23-111
Frame Code	107-XX00 00-160



Two Way Switch - Intermediate	
10AX, 250 V	
Mechanism + Cover Plate	
Screwless Code	500-00XX 35-112
Screw Type Code	500-00XX 25-112
Frame Code	107-XX00 00-160



Control Switch - Light	
10AX, 250 V	
Mechanism + Cover Plate	
Screwless Code	500-00XX 35-105
Screw Type Code	500-00XX 25-105
Frame Code	107-XX00 00-160



Control Switch - Light Illuminated	
10AX, 250 V	
Mechanism + Cover Plate	
Screwless Code	500-00XX 35-106
Screw Type Code	500-00XX 25-106
Frame Code	107-XX00 00-160



Control Switch - Bell	
10AX, 250 V	
Mechanism + Cover Plate	
Screwless Code	500-00XX 35-107
Screw Type Code	500-00XX 25-107
Frame Code	107-XX00 00-160



Control Switch - Bell Illuminated	
10AX, 250 V	
Mechanism + Cover Plate	
Screwless Code	500-00XX 35-155
Screw Type Code	500-00XX 25-155
Frame Code	107-XX00 00-160

Please specify your choice for product and frame colours by applying below codes 'XX' marked space.

XX:  70 MIRROR  71 WHITE  72 BLACK



Control Switch - Bell With Name Plate
10AX, 250 V
Mechanism + Cover Plate
Screwless Code 500-00XX 35-129
Screw Type Code 500-00XX 25-129
Frame Code 107-XX00 00-160



Control Switch - Door
10AX, 250 V
Mechanism + Cover Plate
Screwless Code 500-00XX 35-104
Screw Type Code 500-00XX 25-104
Frame Code 107-XX00 00-160



Roller Blind Two Way Switch
10AX, 250 V
Mechanism + Cover Plate
Screw Type Code 500-00XX 25-159
Frame Code 107-XX00 00-160



Roller Blinds Double One Way Switch
10AX, 250 V
Mechanism + Cover Plate
Screwless Code 500-00XX 35-113
Screw Type Code 500-00XX 25-113
Frame Code 107-XX00 00-160



Air Conditioning Switch
25A, 250 V
Mechanism + Cover Plate
Screw Type Code 500-00XX 06-115
Frame Code 107-XX00 00-160



Heater - Boiler Switch
25A, 250 V
Mechanism + Cover Plate
Screw Type Code 500-00XX 06-154
Frame Code 107-XX00 00-160



Triple One Way Switch (3 Gang 1 Way)
10AX, 250 V
Mechanism + Cover Plate
Screwless Code 500-00XX 32-114
Screw Type Code 500-00XX 22-114
Frame Code 107-XX00 00-160



Triple Two Way Switch (3 Gang 2 Way)
10AX, 250 V
Mechanism + Cover Plate
Screw Type Code 500-00XX 02-108
Frame Code 107-XX00 00-160



Cooling Switch
16A, 250 V
Mechanism + Cover Plate
Screw Type Code 500-00XX 06-141
Frame Code 107-XX00 00-160



Audio Switch
Mechanism + Cover Plate
Screw Type Code 500-00XX 06-123
Frame Code 107-XX00 00-160



Dimmer 800W / Dimmer Filtered 500W
Mechanism + Cover Plate
Screw Type Code 500-00XX 05-134
500-00XX 05-135
Frame Code 107-XX00 00-160



**Two Way Dimmer 300W
RC Dimmer 300W**
Mechanism + Cover Plate
Screw Type Code 500-00XX 05-147
500-00XX 05-179
Frame Code 107-XX00 00-160

Example: 500-002125-100 → Mechanism with Cover Plate "Silver" (code 21)
107-710000-160 → Frame "White" (code 71)



Hotel Warning System Interior Unit
10AX, 250 V
Mechanism + Cover Plate
Screw Type Code 500-00XX 05-186
Frame Code 107-XX00 00-160



Hotel Warning System Exterior Unit
10AX, 250 V
Mechanism + Cover Plate
Screw Type Code 500-00XX 05-187
Frame Code 107-XX00 00-160



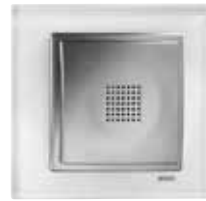
Automation Switch
Automation Switch Single Phase
Automation Switch Double Phase
10AX, 250 V
Mechanism + Cover Plate
Screw Type Code 500-00XX 05-172
500-00XX 05-173
500-00XX 05-174
Frame Code 107-XX00 00-160



Energy Saver Optic
Energy Saver RFID
Energy Saver Mechanical (220V)
Mechanism + Cover Plate
Screw Type Code 500-00XX 05-136
500-00XX 25-136
500-00XX 05-152
Frame Code 107-XX00 00-160



Socket Outlet
16A, 250 V
Mechanism + Cover Plate
Screwless Code 500-00XX 32-116
Screw Type Code 500-00XX 22-116
Frame Code 107-XX00 00-160



Buzzer Bell
Mechanism + Cover Plate
Screw Type Code 500-00XX 05-133
Frame Code 107-XX00 00-160



Socket Outlet Earthed
16A, 250 V
Mechanism + Cover Plate
Screwless Code 500-00XX 31-117
Screw Type Code 500-00XX 21-117
Frame Code 107-XX00 00-160



Childproof Socket Outlet Earthed
16A, 250 V
Mechanism + Cover Plate
Screwless Code 500-00XX 31-119
Screw Type Code 500-00XX 21-119
Frame Code 107-XX00 00-160



Socket Outlet Earthed With Protection Cover
16A, 250 V
Mechanism + Cover Plate
Screwless Code 500-00XX 31-118
Screw Type Code 500-00XX 21-118
Frame Code 107-XX00 00-160



Childproof Socket Outlet Earthed With Protection Cover
16A, 250 V
Mechanism + Cover Plate
Screwless Code 500-00XX 31-158
Screw Type Code 500-00XX 21-158
Frame Code 107-XX00 00-160



UPS Socket Outlet
16A, 250 V
Mechanism + Cover Plate
Screwless Code 500-00XX 33-122
Screw Type Code 500-00XX 23-122
Frame Code 107-XX00 00-160



UPS Childproof Socket Outlet
16A, 250 V
Mechanism + Cover Plate
Screwless Code 500-00XX 33-129
Screw Type Code 500-00XX 23-129
Frame Code 107-XX00 00-160

Please specify your choice for product and frame colours by applying below codes 'XX' marked space.

XX:  70 MIRROR  71 WHITE  72 BLACK



TV Socket Outlet - Through Line (11 dB)
TV Socket Outlet - End Of Line (0,5 dB)
TV Satellite Socket Outlet

Mechanism + Cover Plate

Code 500-00XX 05-137
500-00XX 05-138
500-00XX 05-127

Frame Code 107-XX00 00-160



Satellite Socket Outlet (F-Type Female Connector)
Satellite Socket Outlet - Through Line
Satellite Socket Outlet - End of Line

Mechanism + Cover Plate

Code 500-00XX 05-130
500-00XX 05-148
500-00XX 05-149

Frame Code 107-XX00 00-160



TV Socket Outlet - Through Line
TV Socket Outlet - End of Line

Mechanism + Cover Plate

Code 500-00XX 05-170
500-00XX 05-171

Frame Code 107-XX00 00-160



TV+Satellite Socket Outlet - Through Line (5 dB)
TV+Satellite Socket Outlet - End Of Line (1 dB)

Mechanism + Cover Plate

Code 500-00XX 05-139
500-00XX 05-140

Frame Code 107-XX00 00-160



Audio Socket Outlet

Mechanism + Cover Plate

Code 500-00XX 05-181

Frame Code 107-XX00 00-160



TV Radio Satellite Socket Outlet - Throgh Line

Mechanism + Cover Plate

Code 500-00XX 06-146

Frame Code 107-XX00 00-160



Data Socket Outlet (Empty)

Mechanism + Cover Plate

Code 500-00XX 05-150

Frame Code 107-XX00 00-160



Double Data Socket Outlet (Empty)

Mechanism + Cover Plate

Code 500-00XX 05-151

Frame Code 107-XX00 00-160



Telephone Socket Outlet (Rj11 623K)
Telephone Socket Outlet (Rj45 Cat 3)

Mechanism + Cover Plate

Code 500-00XX 05-124
500-00XX 25-124

Frame Code 107-XX00 00-160



Double Telephone Socket Outlet (2xRj11 623K)
Double Telephone Socket Outlet (2xRj45 Cat 3)

Mechanism + Cover Plate

Code 500-00XX 05-176
500-00XX 05-131

Frame Code 107-XX00 00-160



Double Data Socket Outlet (2xRj45 Cat 6)

Mechanism + Cover Plate

Code 500-00XX 05-126

Frame Code 107-XX00 00-160



Data Socket Outlet (Rj45 Cat 6)
Data Socket Outlet (Cat 6A)

Mechanism + Cover Plate

Code 500-00XX 05-125

500-00XX 05-190

Frame Code 107-XX00 00-160

Example: 500-002125-100 → Mechanism with Cover Plate "Silver" (code 21)
107-710000-160 → Frame "White" (code 71)



**Data Socket Outlet (Rj45 Cat 6)
With Dustproof Cover**
Mechanism + Cover Plate
Code 500-00XX 05-182
Frame Code 107-XX00 00-160



**Data+Telephone Socket Outlet
(Rj45 Cat 6+Rj45 Cat 3)**
Mechanism + Cover Plate
Code 500-00XX 05-132
Frame Code 107-XX00 00-160



USB Socket Outlet
Mechanism + Cover Plate
Code 500-00XX 05-144
Frame Code 107-XX00 00-160



HDMI Socket Outlet
Mechanism + Cover Plate
Code 500-00XX 05-145
Frame Code 107-XX00 00-160



Music Hi-Fi Socket Outlet - 2 Gang
Mechanism + Cover Plate
Code 500-00XX 05-142
Frame Code 107-XX00 00-160



USB Charger Socket Outlet (5V - 2,4A)
Mechanism + Cover Plate
Code 500-00XX 05-177
Frame Code 107-XX00 00-160



VGA Socket Outlet
Mechanism + Cover Plate
Code 500-00XX 05-180
Frame Code 107-XX00 00-160



Double USB Charger Socket Outlet (5V-2,4A)
Mechanism + Cover Plate
Code 500-00XX 05-178
Frame Code 107-XX00 00-160



Cable Outlet Cover (Empty)
Mechanism + Cover Plate
Code 500-00XX 05-175
Frame Code 107-XX00 00-160

Example: 500-002125-100 → Mechanism with Cover Plate "Silver" (code 21)
107-710000-160 → Frame "White" (code 71)

PRODUCT CODE	PRODUCT NAME	BOX QUANTITY	PACKAGE QUANTITY	GROSS WEIGHT	VOLUME M ³
FRAMES					
107-XX00 00-160	Single Frame	1	5	0,56	0,0008
107-XX00 00-161	Double Frame	1	5	0,85	0,0010
107-XX00 00-162	Triple Frame	1	5	1,14	0,0018
107-XX00 00-163	4 Gang Frame	1	5	1,43	0,0040
107-XX00 00-164	5 Gang Frame	1	5	1,72	0,0053

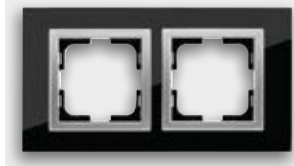
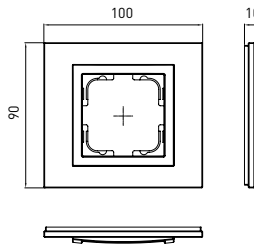
Please specify your choice for frame colours by applying below codes 'XX' marked space.

XX: 70 MIRROR 71 WHITE 72 BLACK

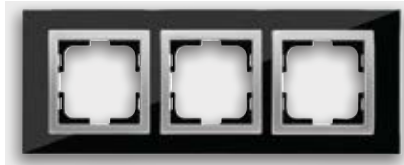
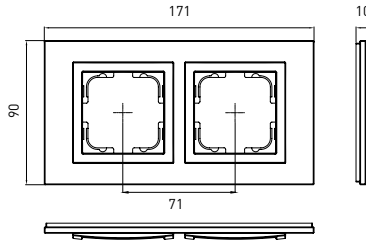
TECHNICAL DRAWINGS



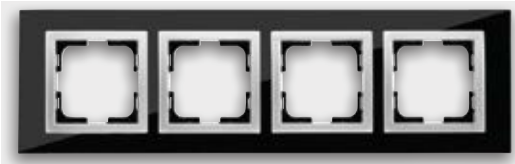
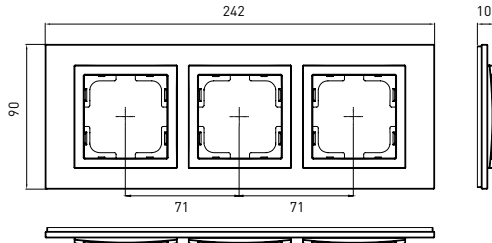
Single Frame



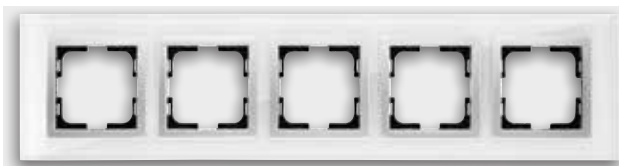
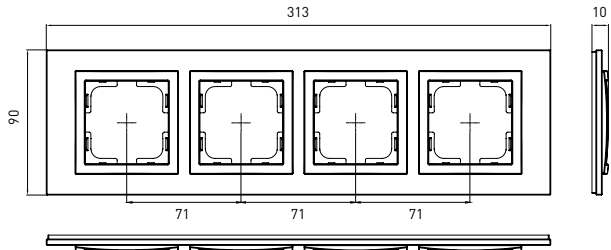
Double Frame



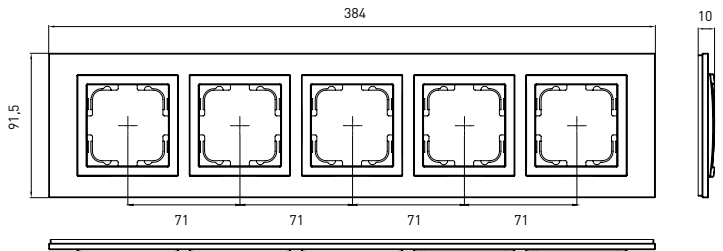
Triple Frame



4 Gang Frame



5 Gang Frame



Style Glass frames can be used both horizontally and vertically.